



FILO
height 1709 mm, length 616 mm. Brown finish (cod. 09).

**Technical features:**

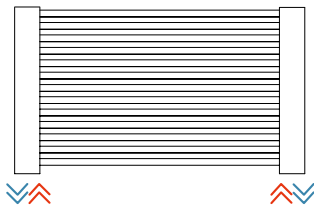
- steel towel warmer radiator
- horizontal elements featuring round tubes 12 mm diameter
- side manifolds with a 45x30 mm ovoid section
- manifold threading 1/2" Gas right
- maximum working pressure 4 bar
- maximum working temperature 95°C

Price included:

- 4 white wall brackets for FILO white and 4 chromed wall brackets for FILO coloured
- 1/2" air vent

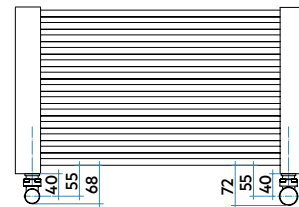
Finishes available	Surcharge
Standard White	
Classic finished	
Special finished	
Other RAL colors	

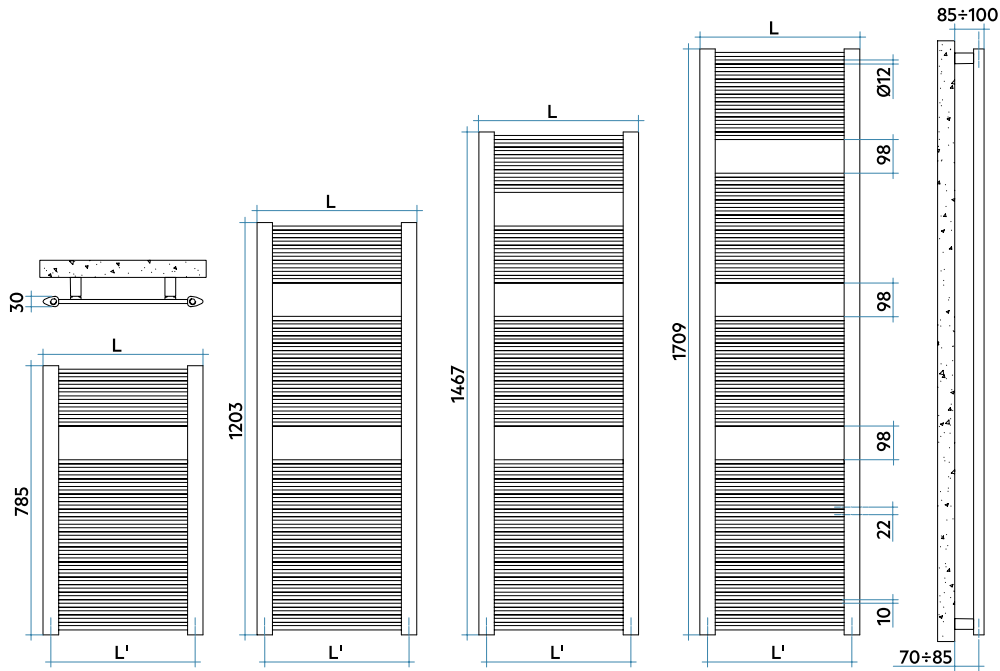
Finishing codes see page 596.

Connections

Laterals

For other types of connections see pag. 414

Connection dimensions with IRSAP valves



Model	Code	Depth mm	Height mm	Width mm	Conn. centre mm	Weight Kg	Cap. lt	Thermal Power				Exp. n.	
								$\Delta t=50^{\circ}\text{C}$ Btu/h	$\Delta t=40^{\circ}\text{C}$ Watt	$\Delta t=30^{\circ}\text{C}$ Watt (*)	$\Delta t=20^{\circ}\text{C}$ Watt		
785 31 rails 1 espace	FIPO46 B 01 IR 01 NNN	30	785	466	406	6,0	2,2	1284	376	286	201	123	1,223
	FIPO51 B 01 IR 01 NNN	30	785	516	456	6,5	2,3	1417	415	316	222	135	1,223
	FIPO61 B 01 IR 01 NNN	30	785	616	556	7,5	2,5	1683	493	375	264	161	1,223
1203 46 rails 2 espaces	FIMO46 B 01 IR 01 NNN	30	1203	466	406	9,0	3,3	1899	556	422	295	178	1,241
	FIMO51 B 01 IR 01 NNN	30	1203	516	456	9,8	3,5	2096	614	466	326	197	1,241
	FIMO61 B 01 IR 01 NNN	30	1203	616	556	11,2	3,8	2489	730	553	387	234	1,241
1467 54 rails 3 espaces	FILO46 B 01 IR 01 NNN	30	1467	466	406	10,8	4,0	2256	661	501	351	212	1,241
	FILO51 B 01 IR 01 NNN	30	1467	516	456	11,6	4,2	2489	730	553	387	234	1,241
	FILO61 B 01 IR 01 NNN	30	1467	616	556	13,3	4,6	2952	865	656	459	277	1,241
1709 65 rails 3 espaces	FIGO46 B 01 IR 01 NNN	30	1709	466	406	12,8	4,7	2692	789	595	414	248	1,263
	FIGO51 B 01 IR 01 NNN	30	1709	516	456	13,8	5,0	2973	871	657	457	274	1,263
	FIGO61 B 01 IR 01 NNN	30	1709	616	556	15,9	5,4	3530	1034	780	543	325	1,263

Mix. Funct.	Code
400	ANRES400WDI
400	ANRES400WDI
400	ANRES400WDI
400	ANRES400WDI
400	ANRES400WDI
700	ANRES700WDI
700	ANRES700WDI
700	ANRES700WDI
700	ANRES700WDI
700	ANRES700WDI
700	ANRES700WDI
1000	ANRES1000WDI

Electric heater for Dual Power

BATHROOMS
RADIATORS

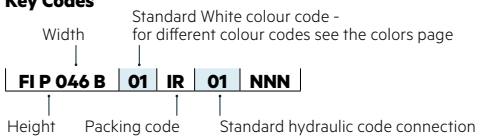
(*) Thanks to the high performance of Irsap FILO radiators, the ideal Δt for low temperature projects is Δt at 30°C.

For Δt different from 50°C use the formula: $Q=Q_n (\Delta t / 50)^n$

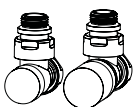
To order a radiator in the mixed version put the code of the Standard version + the code of the corresponding electric heater

Example: Mod. 1709 x 466: **FIGO46 B 01 IR 01 NNN** (€ 411,45) + **ANRES700WDI** (€ 183,57) = Tot. € 595,02

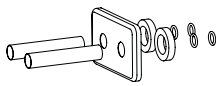
Key Codes



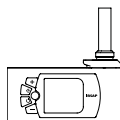
Decorative & Technical Accessories



Kit Valves and Lockshield valve
Pag. 562



Pipe cover kit
Pag. 566



Electronic Control
Pag. 574

